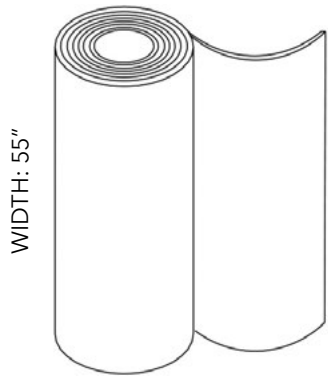




SNOWSOUND® FIBER TEXTILES





FABRIC ROLL SIZE:
27.3 YARDS
8.7 YARDS

PHYSICAL PROPERTIES

Content: 100% Fire Resistant, Acoustic Sound Absorbing Polyester Fibers with Patented Snowsound Technology

Backing: Unbacked

Width: 55" // 140 cm (tolerance + 0 - 3 cm)

Weight: 15.0 oz per square yard / 23 oz per linear yard

Thickness: 1.5 mm

ACOUSTIC PERFORMANCE AND NOISE REDUCTION RATING

Absorption Coefficient and NRC:

Class A Sound Absorption per ISO 11654 achievable depending on installation. Please refer to technical sheets for details.

PERFORMANCE

Flame Resistance:

Passes NFPA 701 // NFPA 260 // CAL. TB 117 // UL 723 Class A // ASTM E 84 Class A

Environment:

100% Recyclable and GREENGUARD GOLD Certified

Abrasion Resistance:

30,000 rubs / cycles (tested according to Martindale Method)

Colorfastness to Light:

Grade 7 - "Outstanding" (Passes AATCC 16 / ISO 105-B02:2014)

Colorfastness to Crocking:

Wet - Grade 5. Dry - Grade 4/5. (Passes AATCC 8 / ISO 105-X12: 2016)

Propensity to Surface Fuzzing and Pilling:

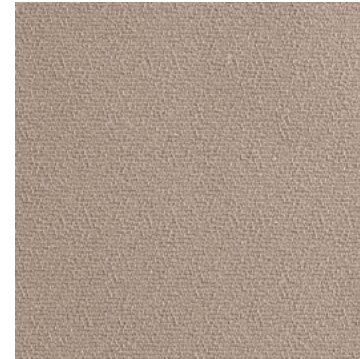
Grade 5 - "no change" (Passes ISO 12945-2:2002)

Washing and Maintenance:

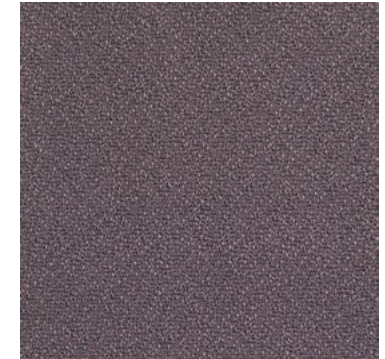
Normal machine washing up to 86 degrees Fahrenheit. Ironing on low heat acceptable. Dry cleaning is acceptable (any solvent except Trichloroethylene). Do not tumble dry.



White (8.7 yd) 7F1-8-0001
White (27.3 yd) 7F1-25-0001



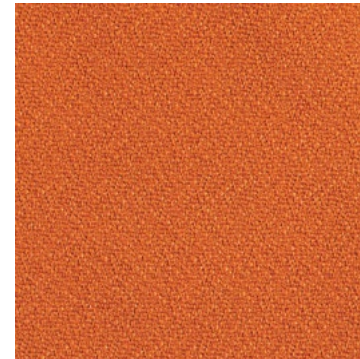
Beige (8.7 yd) 7F1-8-1008
Beige (27.3 yd) 7F1-25-1008



Dove Gray (8.7 yd) 7F1-8-2005
Dove Gray (27.3 yd) 7F1-25-2005



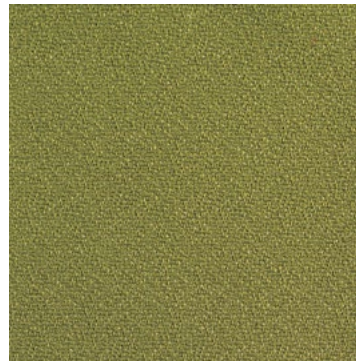
Sun Yellow (8.7 yd) 7F1-8-3008
Sun Yellow (27.3 yd) 7F1-25-3008



Carrot Orange (8.7 yd) 7F1-8-4030
Carrot Orange (27.3 yd) 7F1-25-4030



Red (8.7 yd) 7F1-8-4027
Red (27.3 yd) 7F1-25-4027



Olive Green (8.7 yd) 7F1-8-7004
Olive Green (27.3 yd) 7F1-25-7004

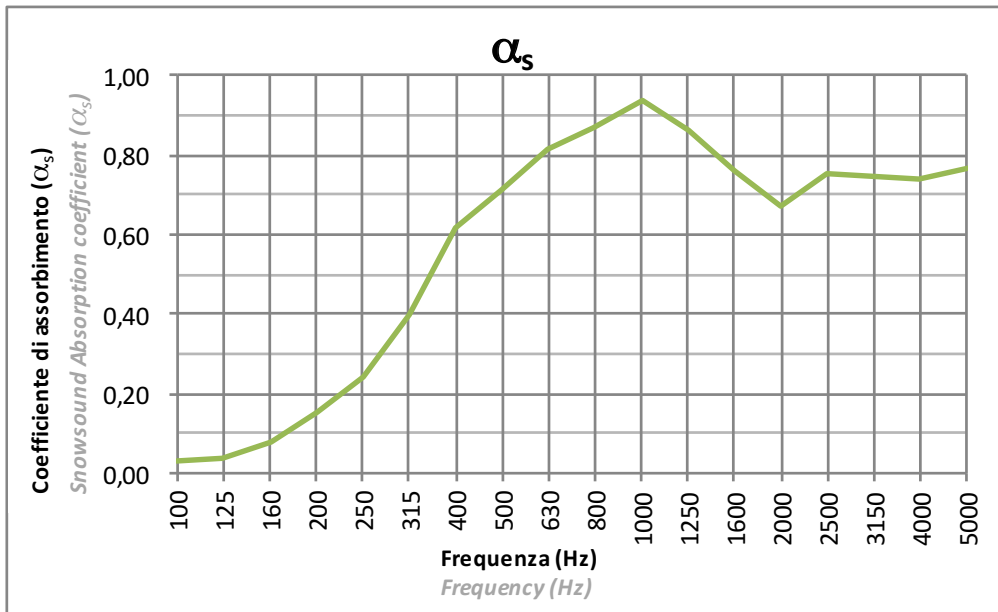
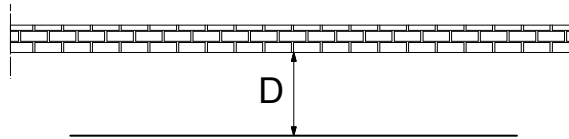


Silver Gray (8.7 yd) 7F1-8-8004
Silver Gray (27.3 yd) 7F1-25-8004

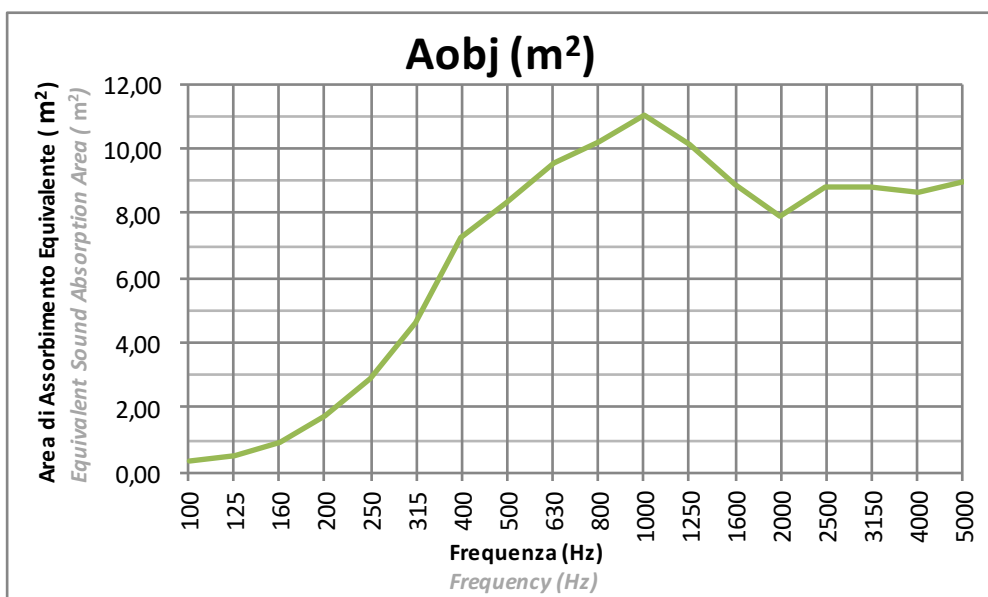
SNOWSOUND-FIBER 1

Tessuto: PLANARE
Fabric: FLAT

Installazione: Distanza da parete 10cm (D=10cm)
Installation: Distance from the wall 10cm (D=10cm)



La prova è stata eseguita secondo le prescrizioni della norma UNI EN ISO 354
Test executed according to UNI EN ISO 354

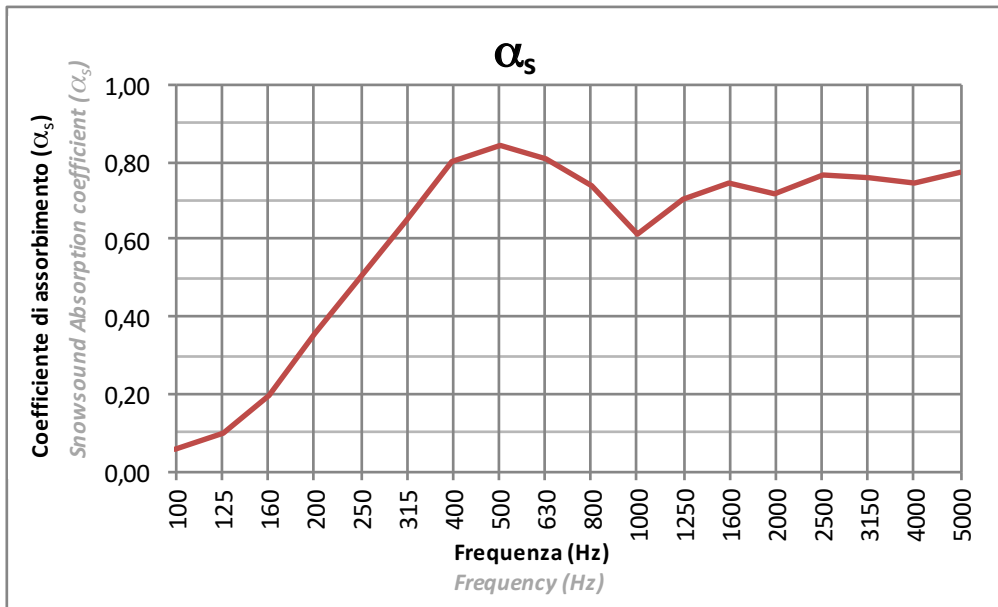
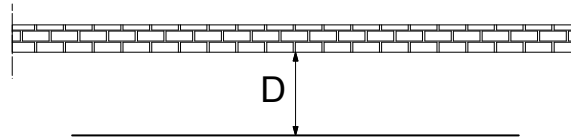


La prova è stata eseguita secondo le prescrizioni della norma UNI EN ISO 354
Test executed according to UNI EN ISO 354

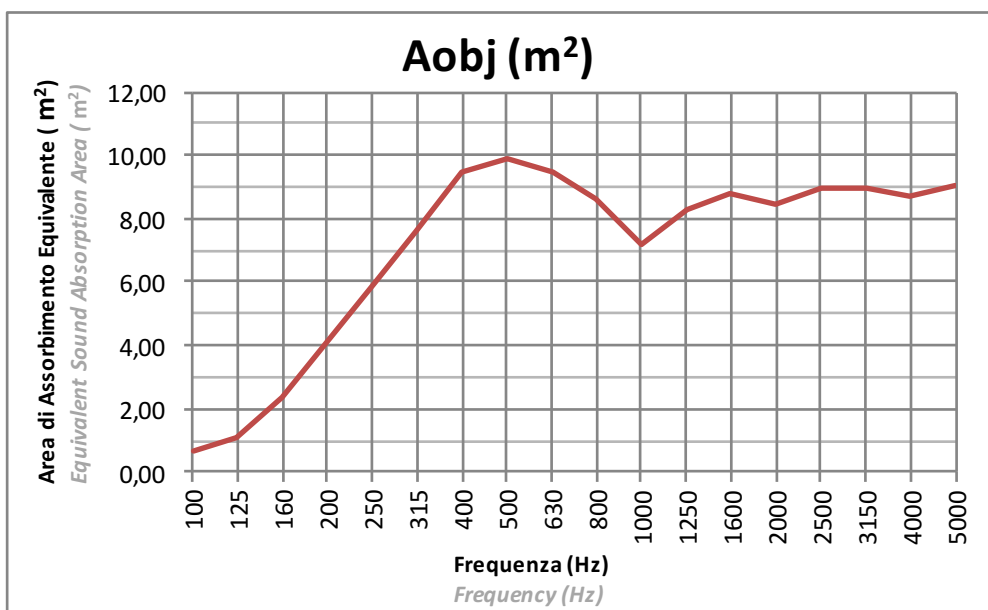
SNOWSOUND-FIBER 1

Tessuto: PLANARE
Fabric: FLAT

Installazione: Distanza da parete 20cm (D=20cm)
Installation: Distance from the wall 20cm (D=20cm)



La prova è stata eseguita secondo le prescrizioni della norma UNI EN ISO 354
Test executed according to UNI EN ISO 354

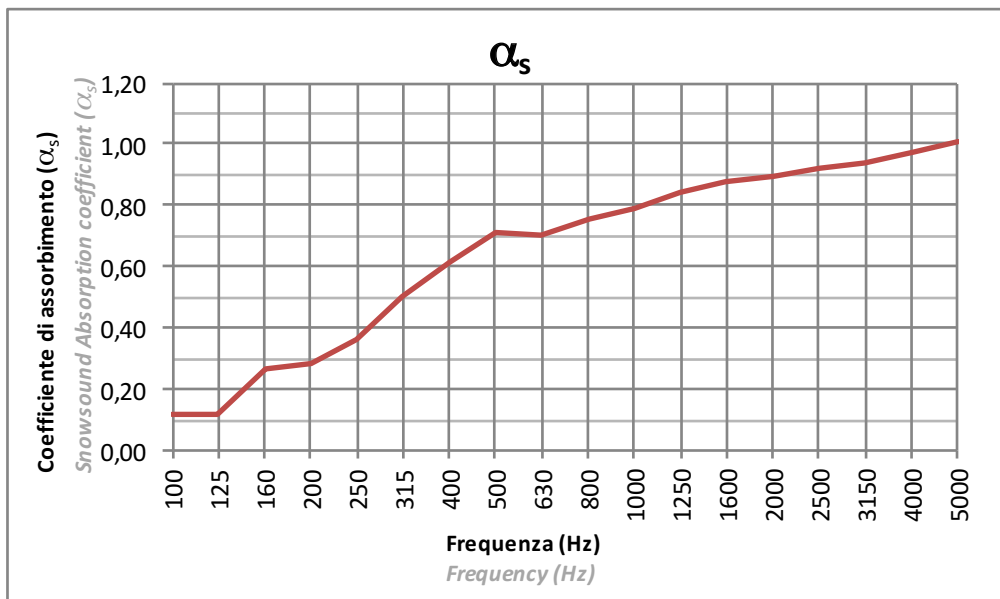
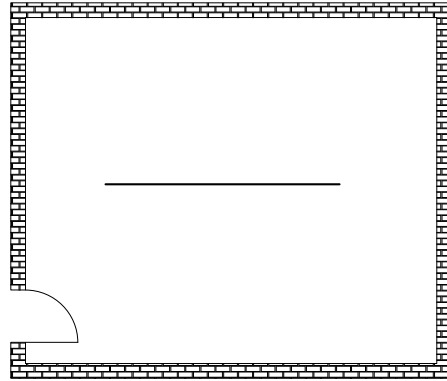


La prova è stata eseguita secondo le prescrizioni della norma UNI EN ISO 354
Test executed according to UNI EN ISO 354

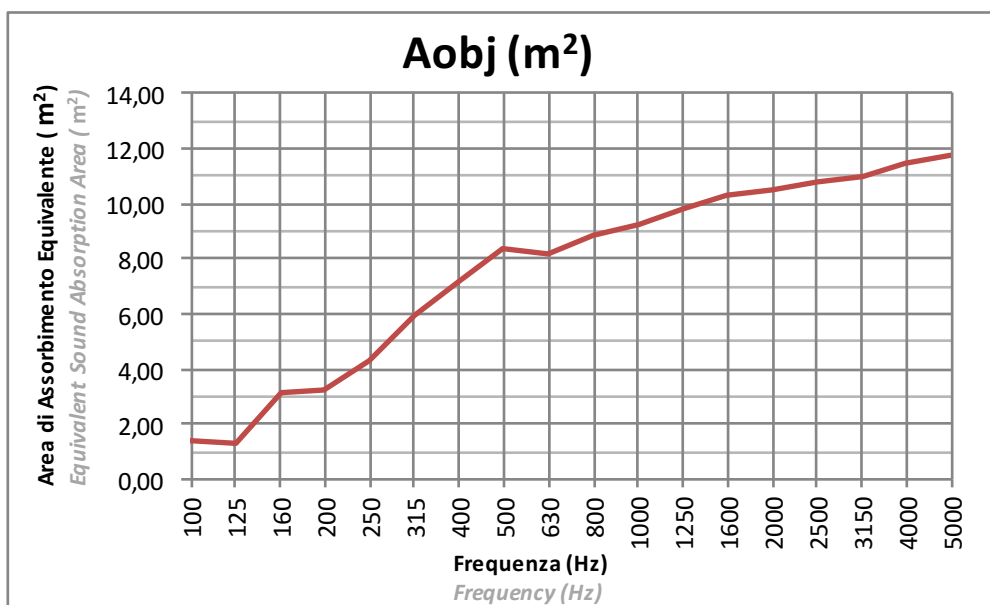
SNOWSOUND-FIBER 1

Tessuto: PLANARE
Fabric: FLAT

Installazione: CENTRO STANZA
Installation: CENTER OF THE ROOM



Procedura Sperimentale
Experimental Procedure

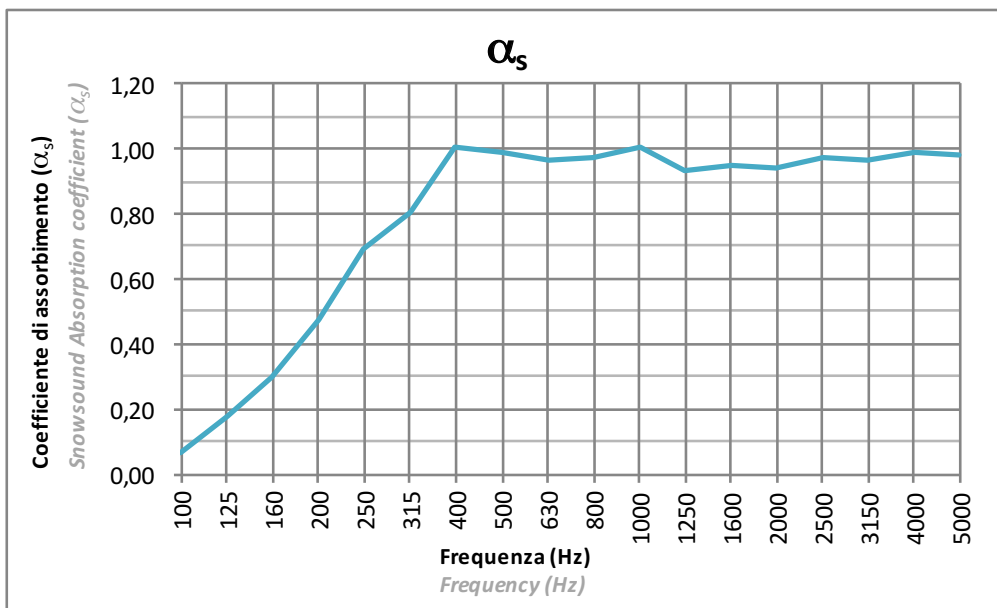
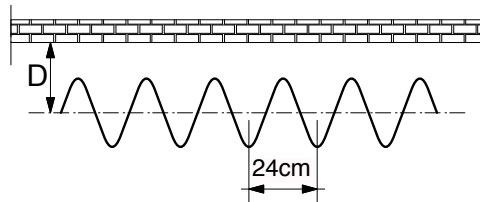


La prova è stata eseguita secondo le prescrizioni della norma UNI EN ISO 354
Test executed according to UNI EN ISO 354

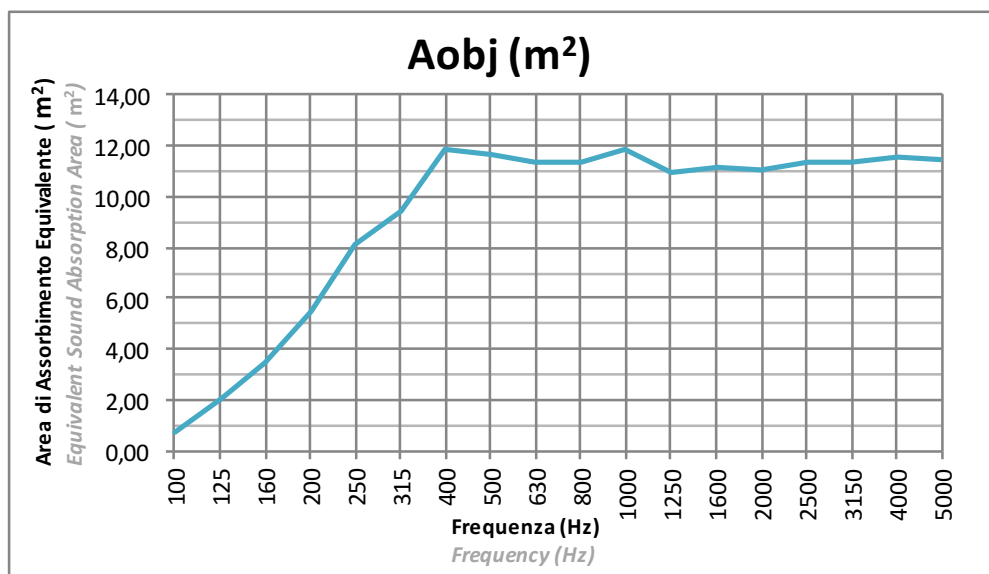
SNOWSOUND-FIBER 1

Tessuto: ONDULATO a passo 24cm
Fabric: WAVY (24cm pace)

Installazione: Distanza dall'asse da parete 20cm (D=20cm)
Installation: Wall to axis distance 20cm (D=20cm)



La prova è stata eseguita secondo le prescrizioni della norma UNI EN ISO 354
Test executed according to UNI EN ISO 354

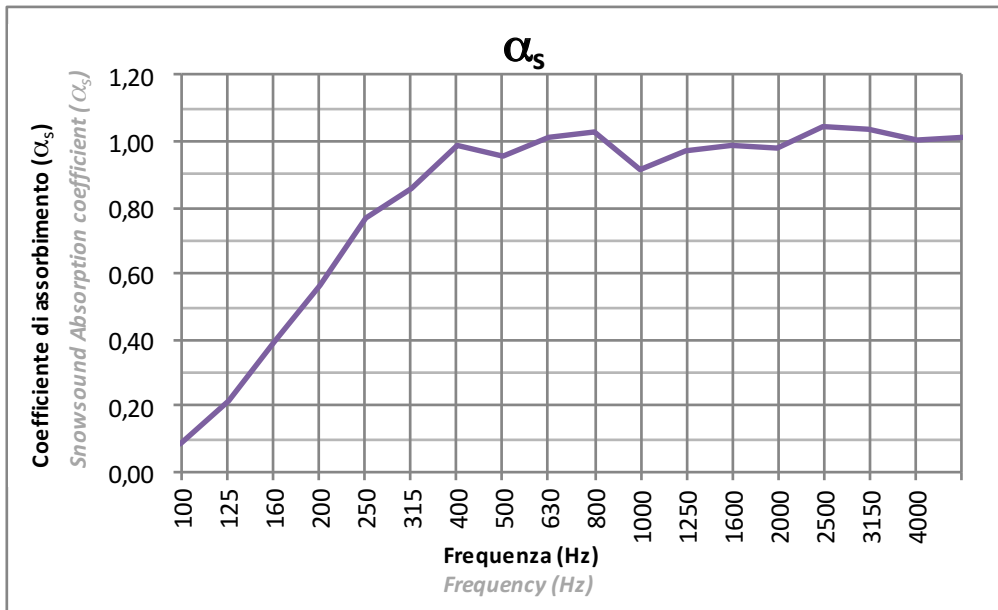
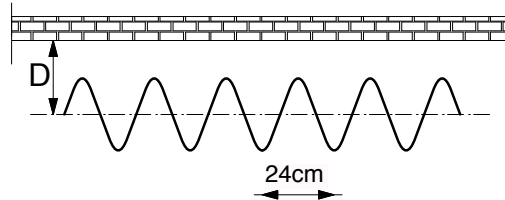


La prova è stata eseguita secondo le prescrizioni della norma UNI EN ISO 354
Test executed according to UNI EN ISO 354

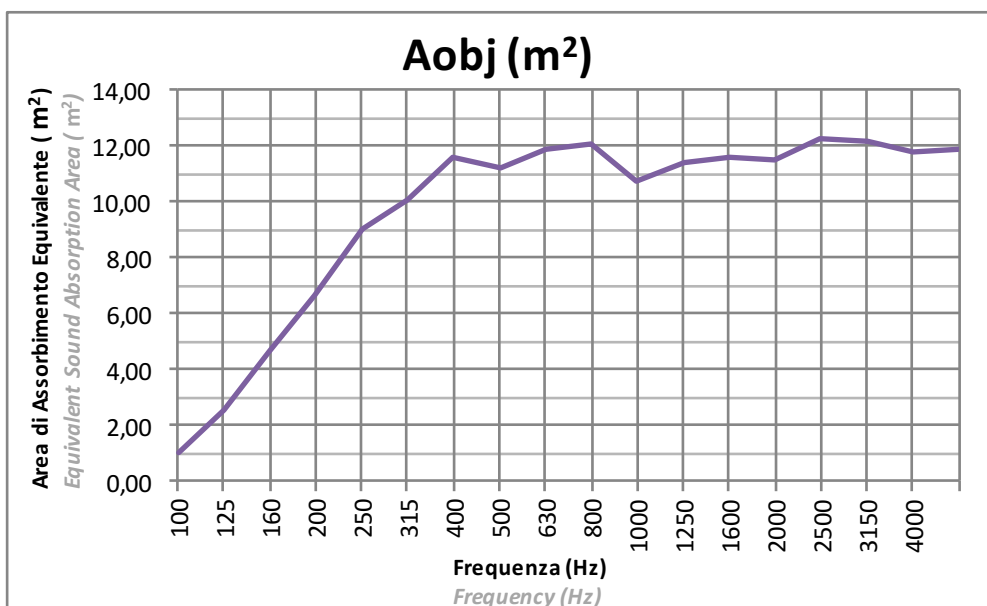
SNOWSOUND-FIBER 1

Tessuto: ONDULATO a passo 24cm
Fabric: WAVY (24cm pace)

Installazione: Distanza dall'asse da parete 30cm (D=30cm)
Installation: Wall to axis distance 30cm (D=30cm)



La prova è stata eseguita secondo le prescrizioni della norma UNI EN ISO 354
Test executed according to UNI EN ISO 354

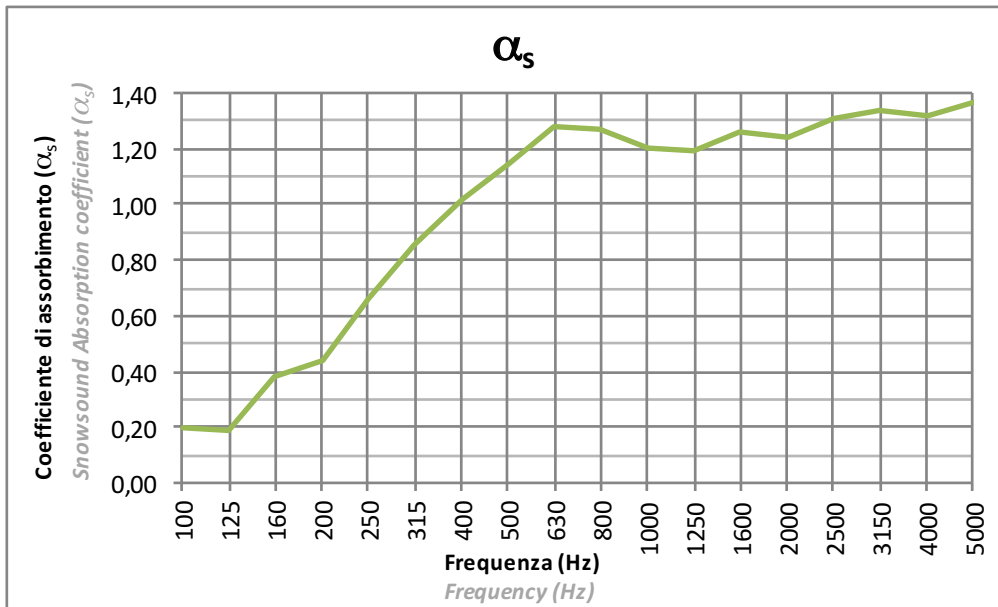
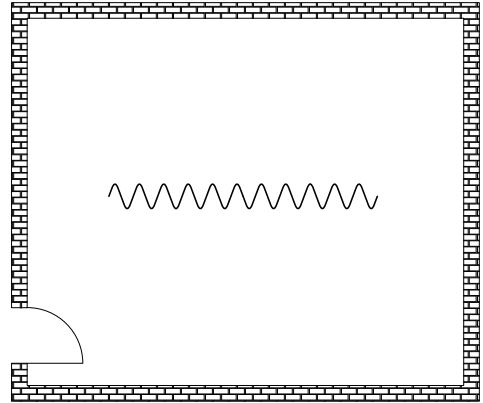
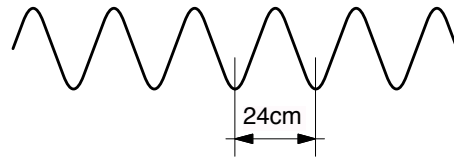


La prova è stata eseguita secondo le prescrizioni della norma UNI EN ISO 354
Test executed according to UNI EN ISO 354

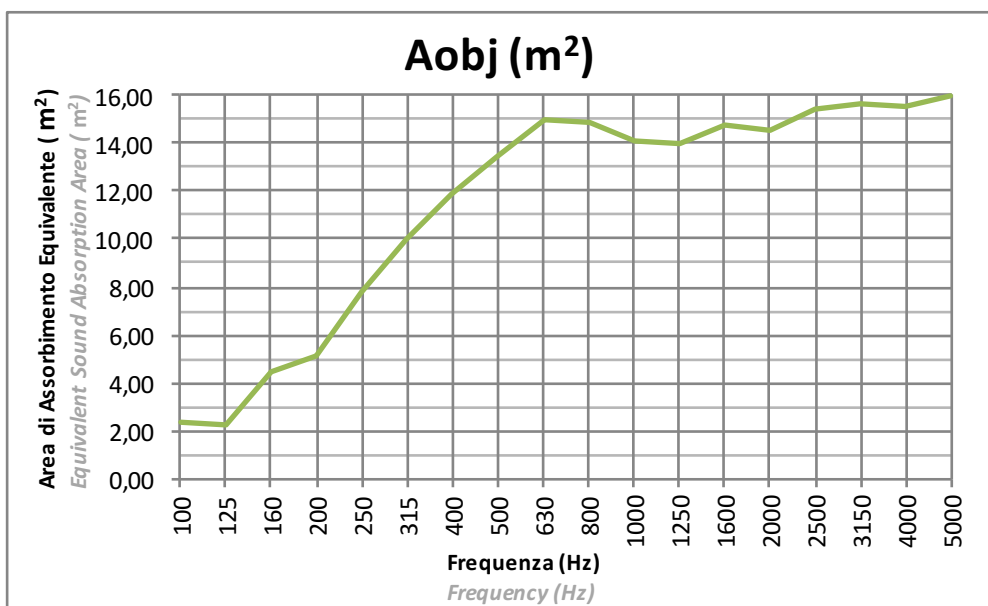
SNOWSOUND-FIBER 1

Tessuto: ONDULATO a passo 24cm
Fabric: WAVY (24cm pace)

Installazione: CENTRO STANZA
Installation: CENTER OF THE ROOM



Procedura Sperimentale
Experimental Procedure



La prova è stata eseguita secondo le prescrizioni della norma UNI EN ISO 354
Test executed according to UNI EN ISO 354